

**5d performance: SPY +1.6%, DIA +1.3%, IWM +1.3%, QQQ +1.4%, EEM +1.3%, EFA +0.8%, TLT +0.4%, GLD +1.3%**

**Week head:** A huge week ahead for earnings and events behind us. A couple takeaways from last week:

1. The Fed is back to be “data dependent”
2. Earnings releases were “mixed” with even more “mixed” reactions
3. The jobs report & ISM data was strong (even taking into consideration the prev month was revised down)
4. Going back to #1 → if the data is too strong, rate hikes could be back on table, so something to watch for

More earnings reports coming next week. Here are some implied moves for earnings calculated by @OptionMillionaires

ALXN 6.2%	GRUB 12.4%	SYN 5.2%
CL 2.1%	HUM 3.4%	TTWO 9.1%
CMG 7.3%	IRBT 13.3%	TWTR 13.1%
DIS 3.1	LITE 11.7%	GILD 4.3%
EA 7.2%	REGN 4.8%	GOOGL 4.7%
FEYE 9.2%	RL 7.8%	SSTX 8.9%
GM 4.5%	SNAP 15.0%	
GPRO 15.2%	SPOT 9.3%	

**Thoughts & Strategy:** From last week: *“I am going to stick with what I have been saying now for weeks and it is a “KIS” approach. The SPY, QQQ, IWM price is above the 5d MA (Moving Average). Regardless of overhead supply, trendlines, etc. – price remains in a short-term uptrend – and I will stick with the trend until the trend changes rather than make predictions.*

Considering the above, what do I want to add to the “KIS” approach going into this week? *Basically, be smart and don’t get greedy.* The market has been on an amazing run since 12/24... and have profited from it, I am +24% this year in my trading account:

Monthly and quarterly total returns:

	YTD	JAN
	24.43%	24.43%
		Q1 I

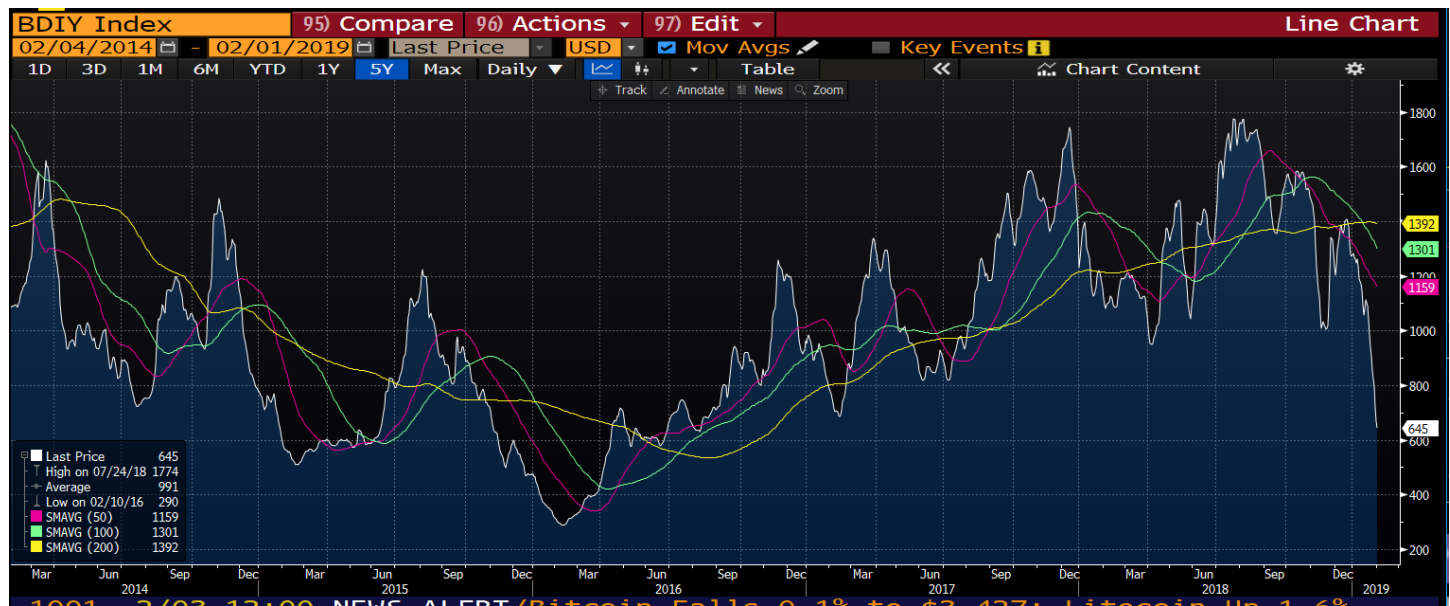
*These returns were off of a combination of stock & options, day & swing trading. I am going to give a webinar on stock vs option trading next week.*

*Elaborating on the statement, “be smart and don’t get greedy..” We know that markets don’t go up/down in a straight line... so, I make sure that I am taking profits on trades and ratcheting up stops. If the market pulls back in the next week or two, I want to have a cash on the sidelines to buy the next dip. In the meantime, I have several trade setups that I like right now, but I will be picky and choosy in regards to adding risk after a good run in equities. To my detriment, I had some great trades last week, but I sized them smaller than average due to playing a little more conservatively. Am I ok with this? Absolutely, and my trading most likely will be the same this week → participating but at the level I am comfortable with – we are in a new month and have plenty of time.*

Chart that makes you go mmm...

**BDIY** - BDI Baltic Exchange Dry Index - It is reported around the world as a proxy for dry bulk shipping stocks as well as a general shipping market bellwether.

Not sure the reason here, but there is a recent drop off in shipping...





### Last week's sector performers:

#### Best 5d:

Symbol	Description	5d % chng
GDX	Gold Miners	6.56%
ITB	Home Builders	4.47%
TAN	Solar	4.41%
XME	Metals & Mining	3.63%
ITA	Defense & Aerospace	3.28%
XLE	Energy	3.11%
XLC	Communications	3.07%
IYR	REITs	2.93%
PSJ	Software	2.91%
XLP	Staples	2.88%
XLI	Industrials	2.58%
XLU	Utilities	2.31%

#### Worst 5d:

Symbol	Description	5d % chng
XRT	Retail	-1.86%
KRE	Regional Banks	-0.09%
IYZ	Telecom	0.00%
OIH	Oil Services	0.12%
KBE	Banks	0.14%
XLY	Cons Discretion	0.15%
XLF	Financials	0.19%
XOP	Oil & Gas Expl Prod	0.56%
XLB	Materials	0.73%
IBB	Biotech	0.76%
ROBO	Robotics & Automat	0.83%
SLX	Steel	0.88%

### Last week's International performers:

#### Best 5d:

Symbol	Description	5d % chng
EGPT	Egypt	9.27%
GXG	Colombia	4.56%
ARGT	Argentina	4.01%
EWZ	Brazil	3.61%
EPU	Peru	2.93%
ECH	Chile	2.87%
EIS	Israel	2.41%
EWQ	France	2.32%
EWU	UK	2.27%
TUR	Turkey	2.23%
GREK	Greece	1.95%
THD	Thailand	1.92%

#### Worst 5d:

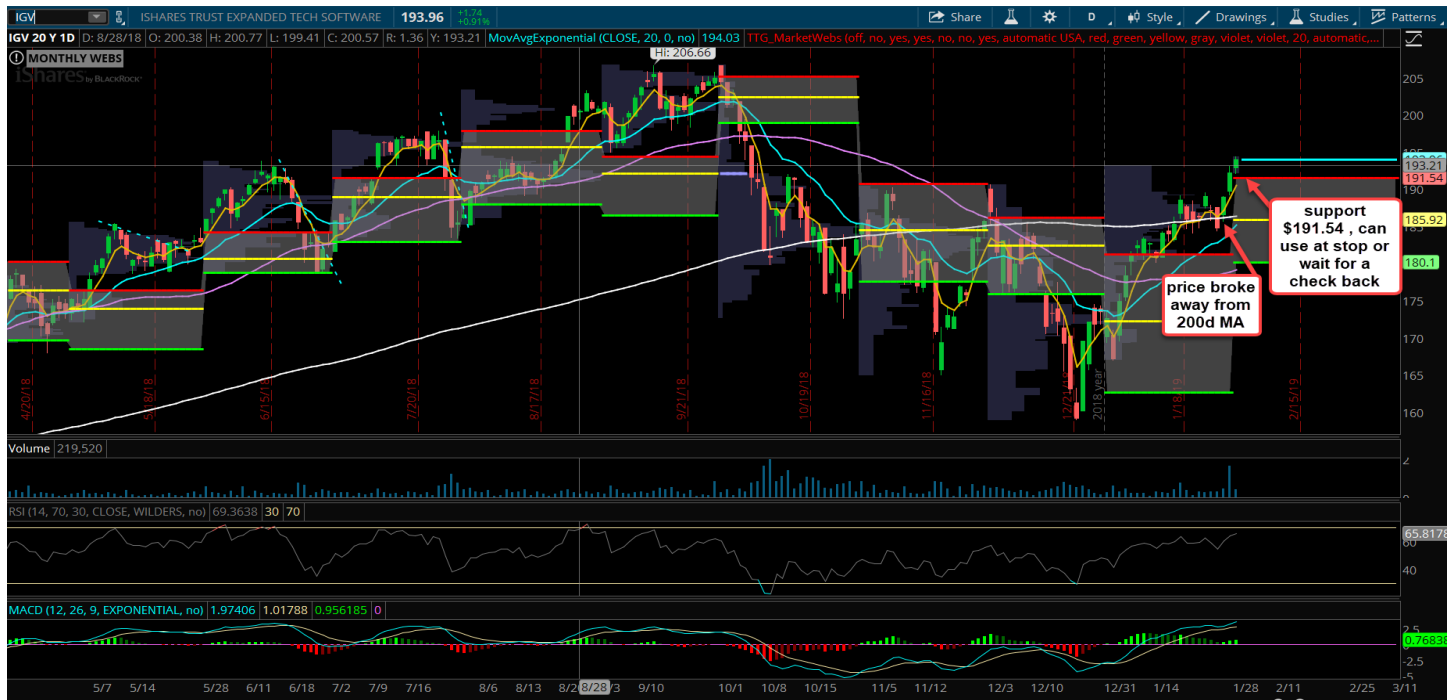
Symbol	Description	5d % chng
NGE	Nigeria	-2.92%
EUFN	EURO FINS	-1.75%
EWP	Spain	-1.70%
EPI	India	-1.62%
VNM	Vietnam	-1.39%
ENZL	New Zealand	-1.35%
HEWG	Germany (FX'd)	-0.87%
EWG	Germany	-0.52%
EWS	Singapore	-0.42%
EWM	Malaysia	-0.29%
DXJ	Japan (FX'd)	-0.16%
EWI	Italy	-0.04%

## Chart List -

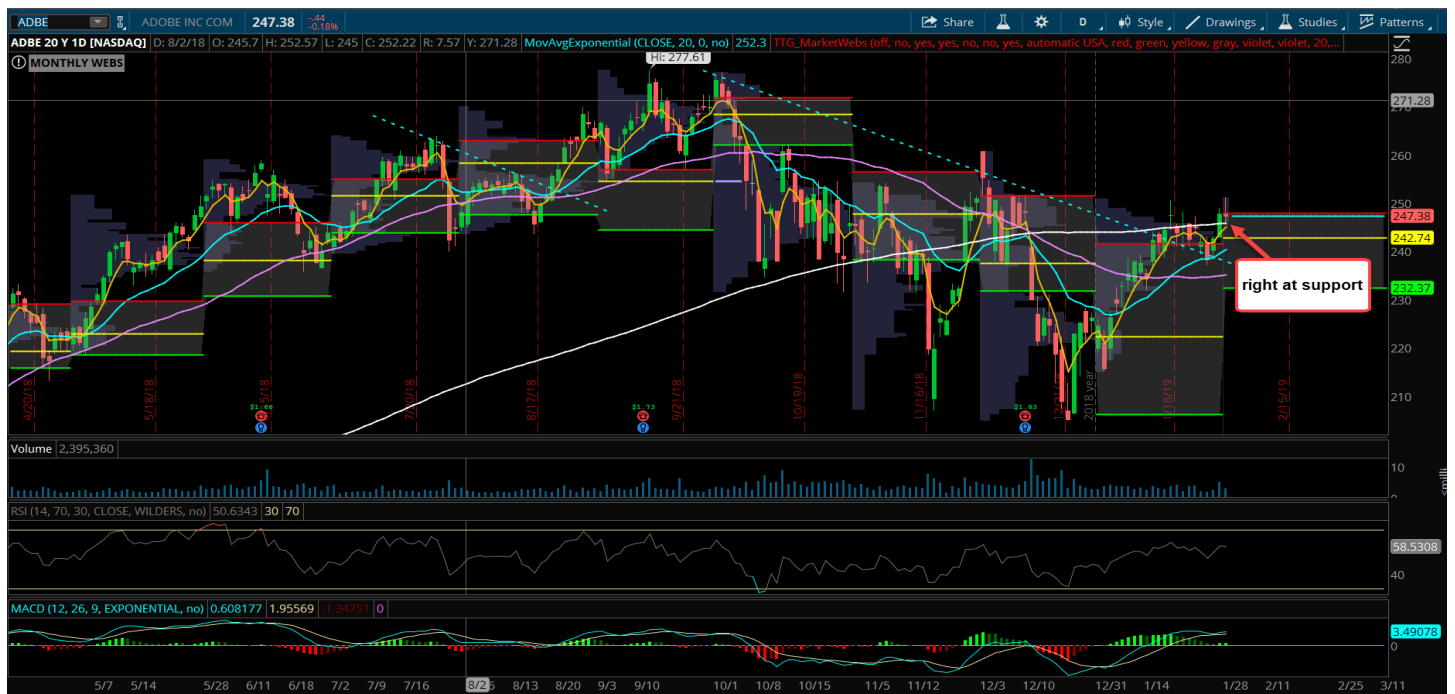
From last week, "In every '19 newsletter so far, I have mentioned the strength in Application / Enterprise / Infrastructure Software Companies..." **The run in these software names has been nothing short of awesome.** How much more do they have to go? Well, looking at the IGV ETF I have to say that it is not super overbought and the technicals looks attractive... **Keep an eye on earnings reports in the group, they will have to justify the recent price action w/ strong reports, names reporting: ULTI, ZEN, PAYC, MANH, DATA, NEWR, FTNT, and RPD.** Note I have active trades on in ADSK, TEAM, ZS, and ADBE (recent exits COUP, QLYS, ZEN)

So, I will have a couple setups still in the space, but also want to focus on a couple other groups.

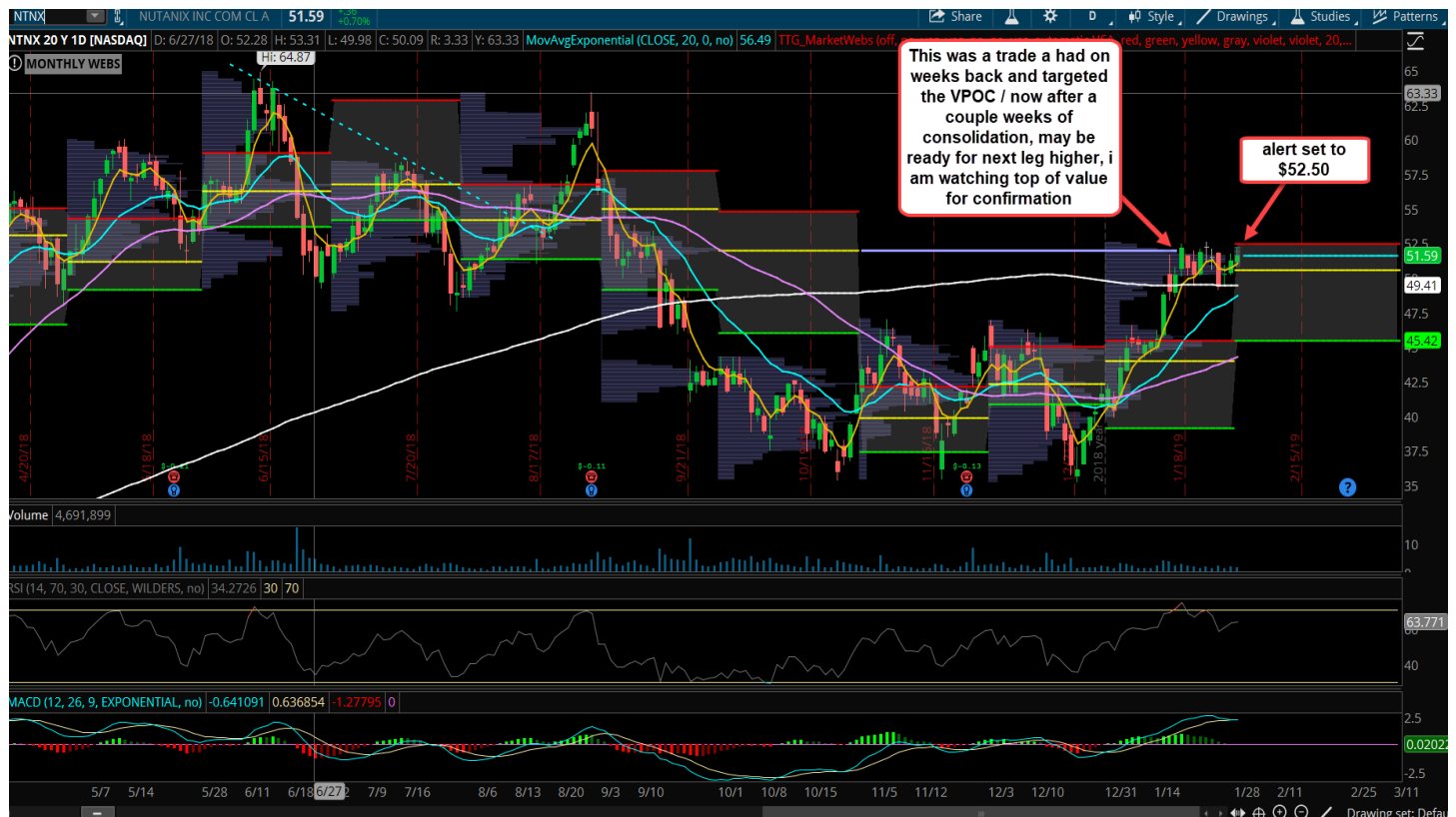
### IGV - iShares Expanded Tech-Software Sector ETF



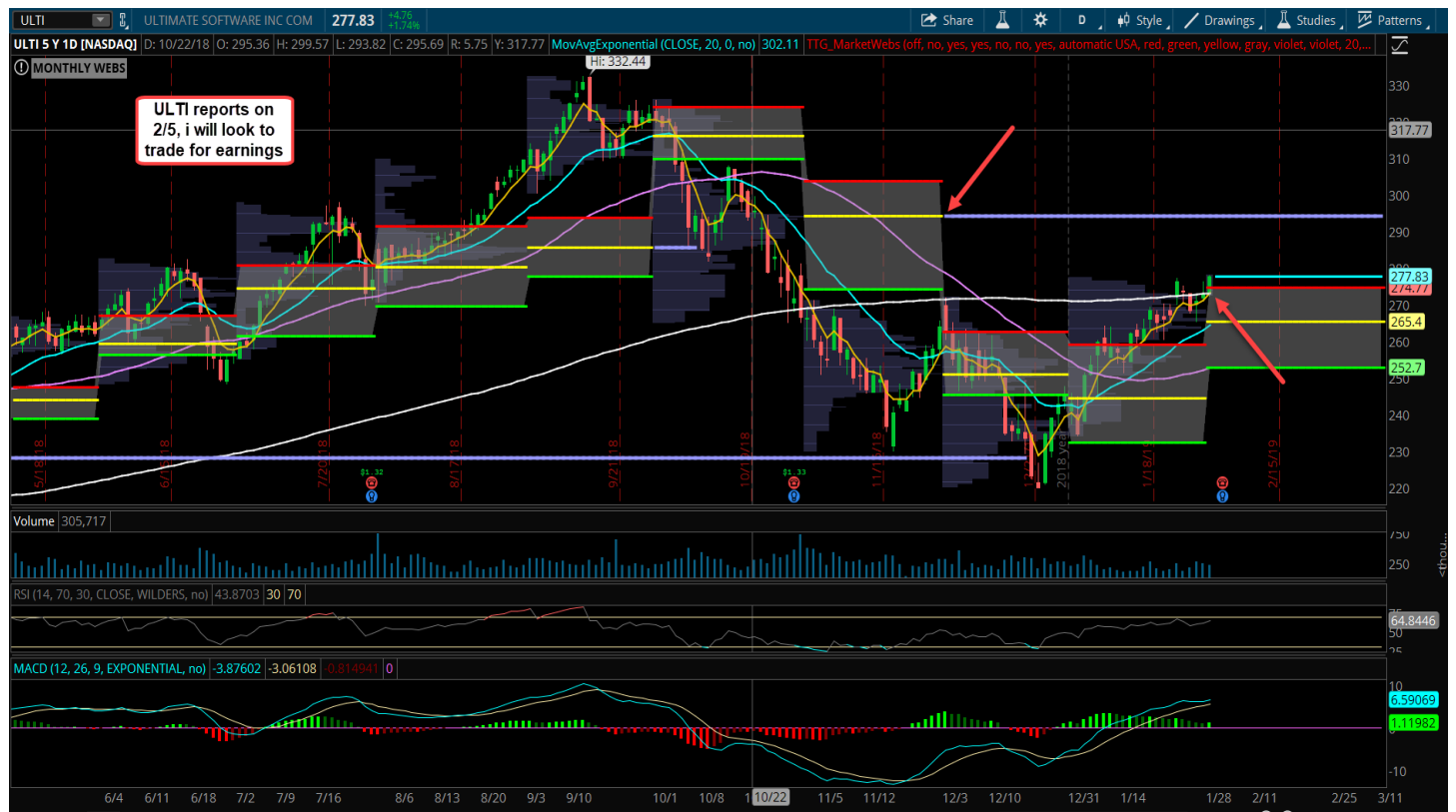
### ADBE - Adobe Inc.



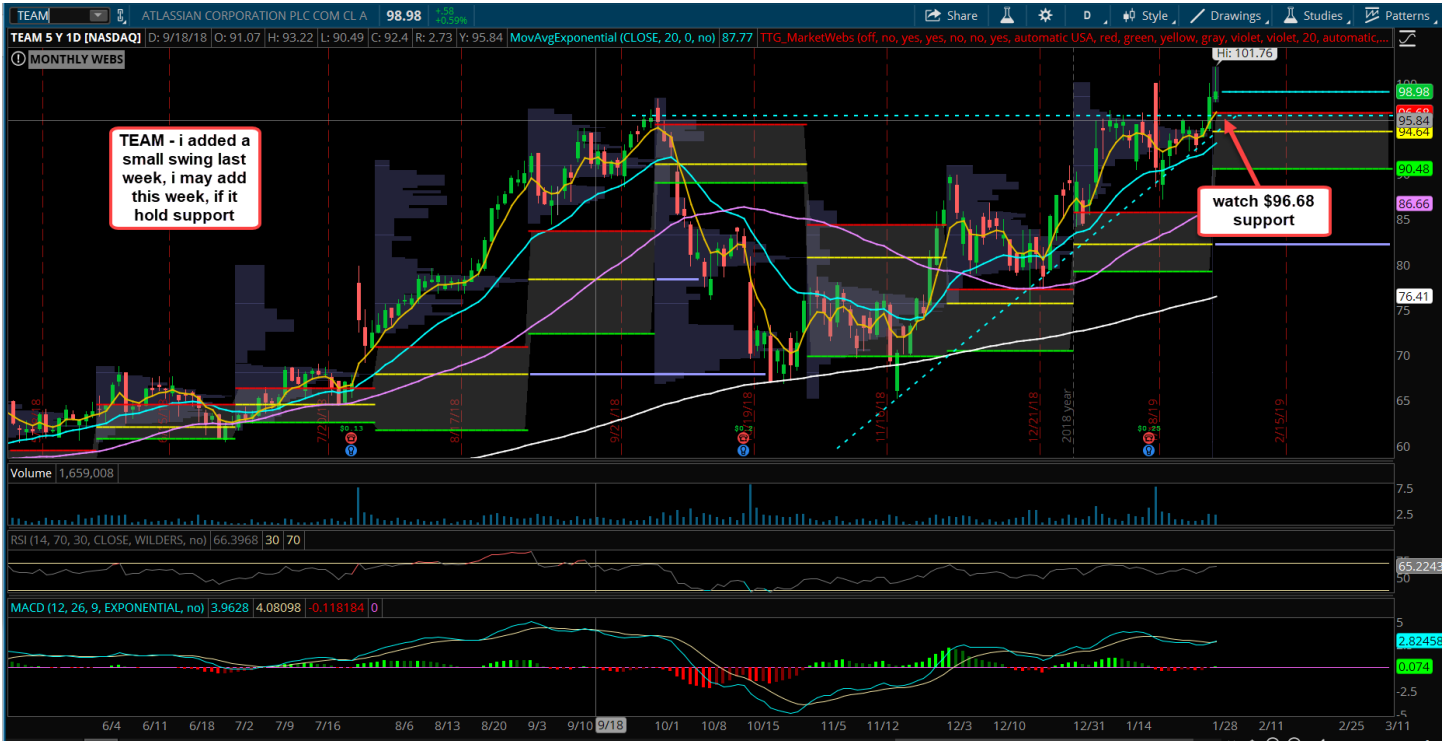
## NTNX - Nutanix, Inc.



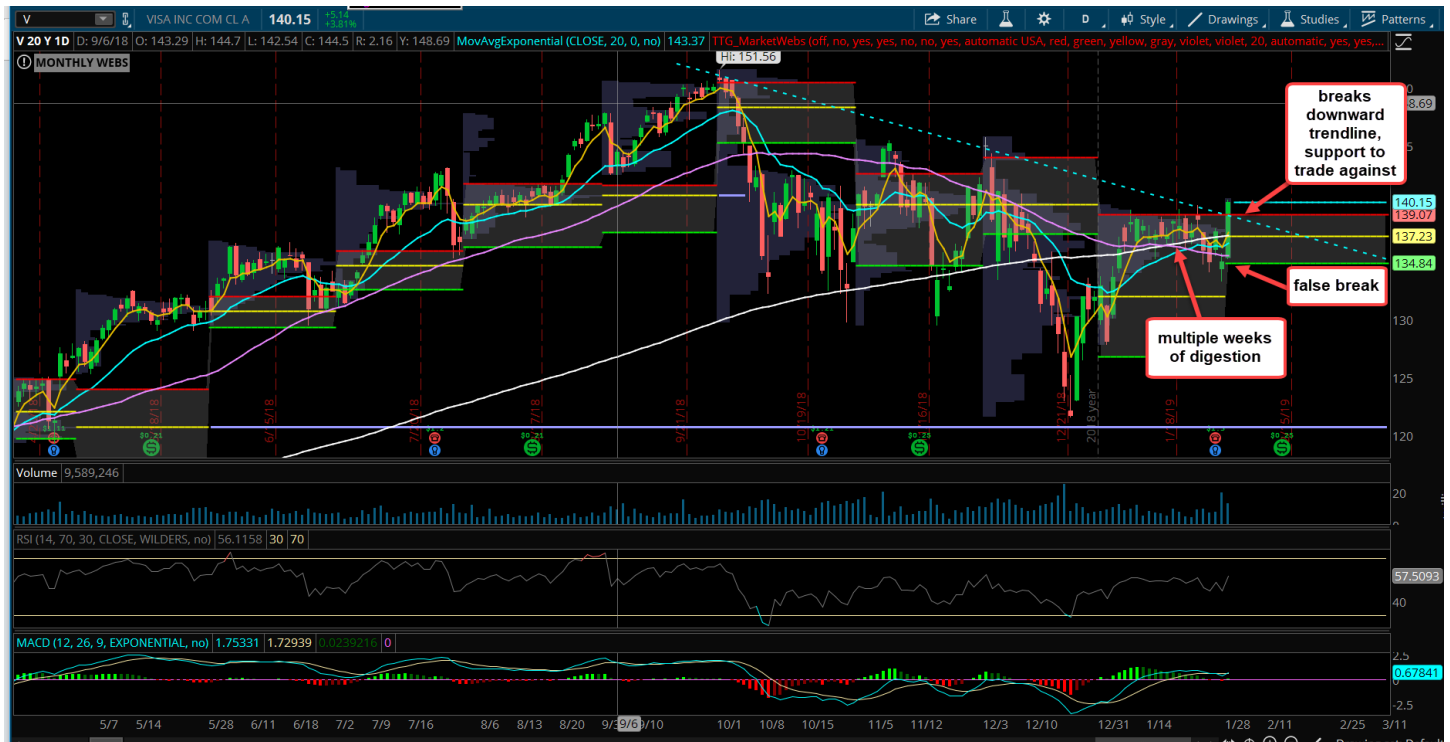
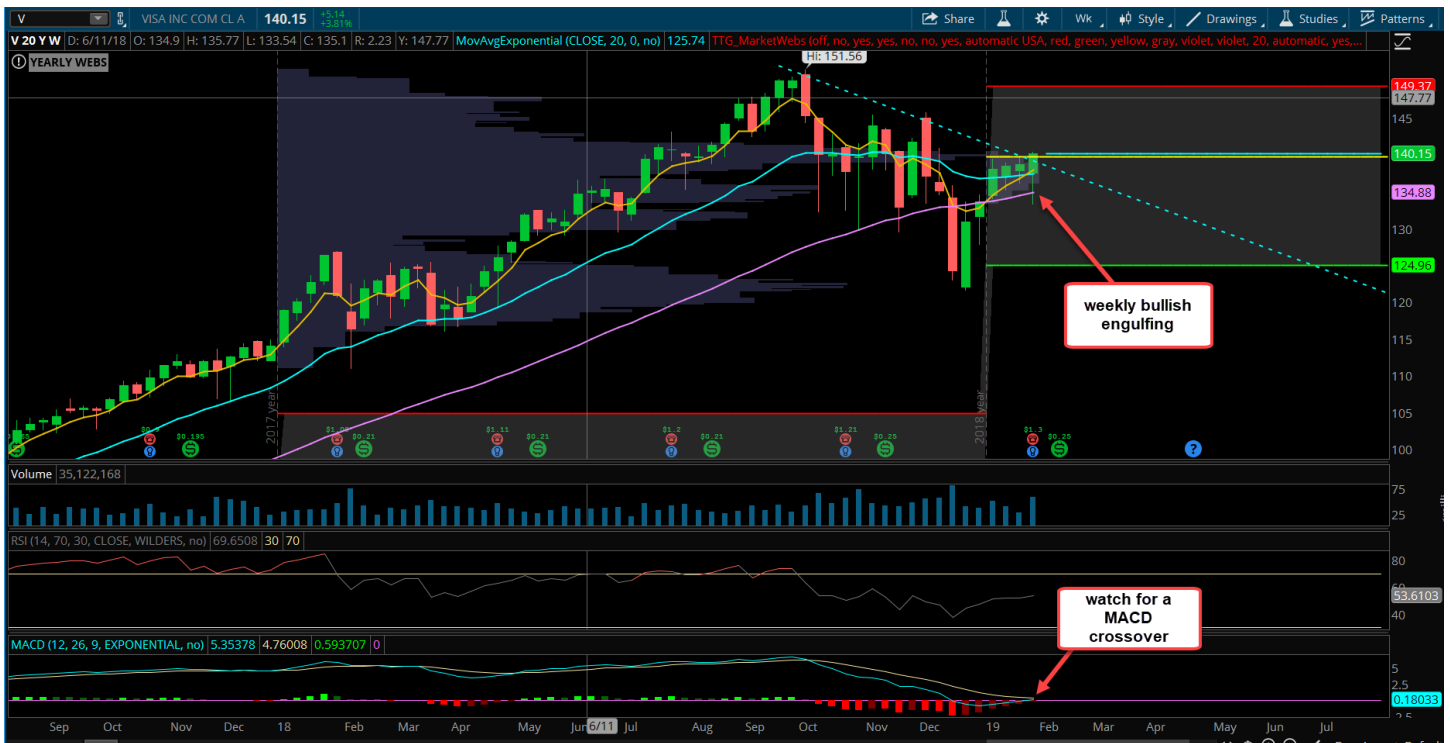
## ULTI - The Ultimate Software Group, Inc.



TEAM - Health Insurance Innovations, Inc. (HIIQ)

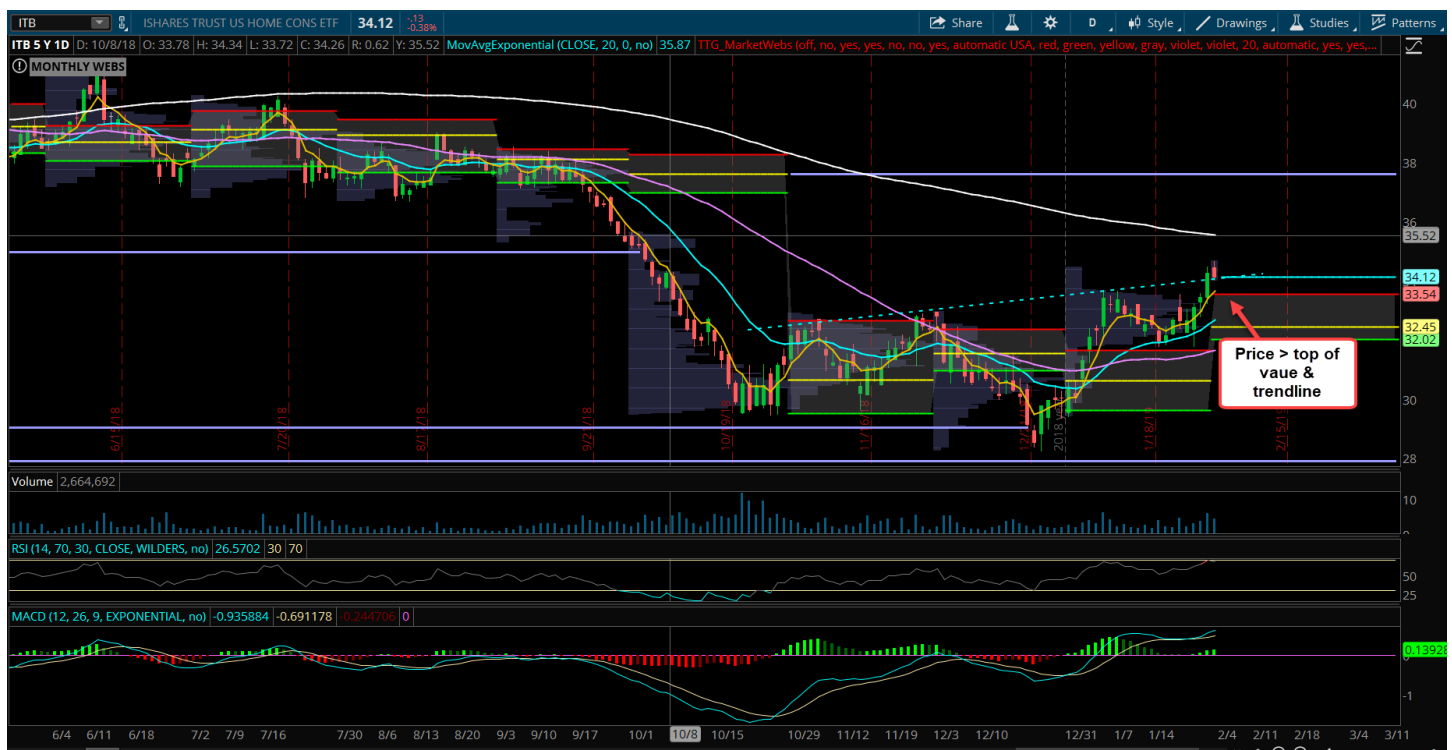
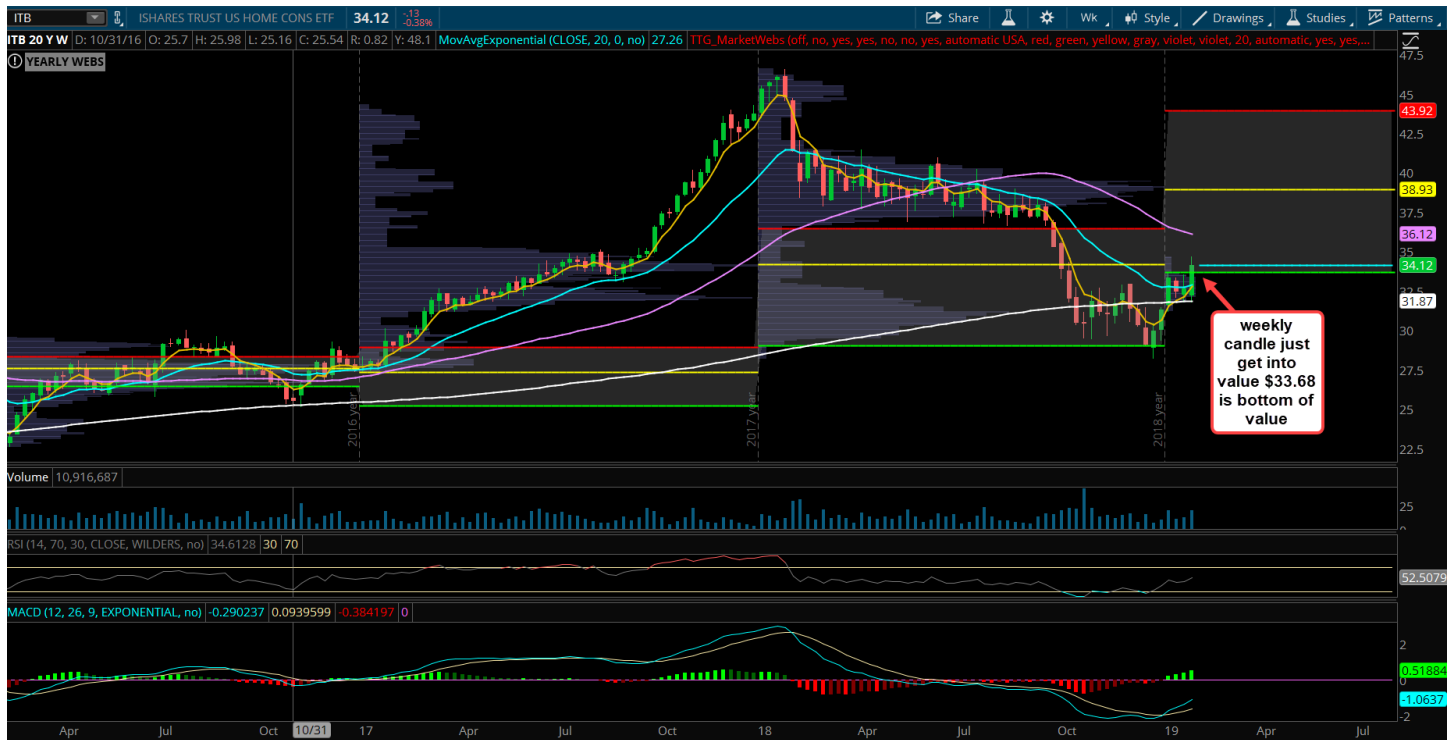


## V - Visa Inc. (weekly & daily chart)



## ITB- iShares U.S. Home Construction ETF (weekly & daily chart)

This is a bit of a contrarian play considering Housing has been a weak area of the economy. However, there was an uptick in New Home Sales last week which were 657k vs 570k exp. In addition, the jobs market remains strong, Friday's NFP report indicated +304k vs +165k expected.

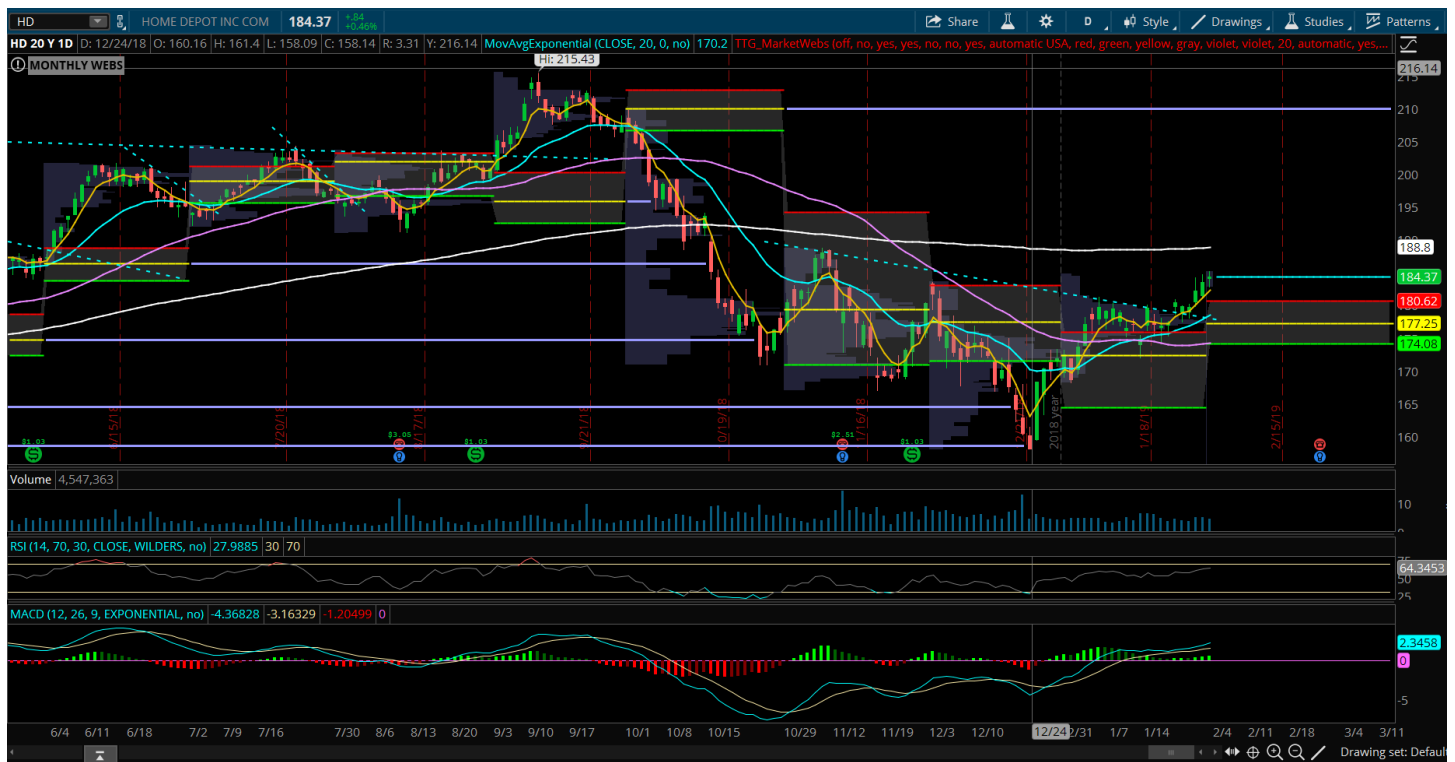




## DHI- D.R. Horton, Inc.



## HD- The Home Depot, Inc.



Thank you for reading the TTG newsletter, please respond back to me with any comments or questions.

Copyright © Tribeca Trade Group. All of the information in this newsletter is for entertainment and educational purposes only and is not to be construed as investment or trading advice. None of the information in this newsletter is guaranteed to be accurate, complete, useful or timely.

**IMPORTANT NOTICES AND DISCLAIMERS** TriBeCa Trade Group is not an investment advisor and is not registered with the U.S. Securities and Exchange Commission or the Financial Industry Regulatory Authority. Further, owners, employees, agents or representatives of TriBeCa Trade Group are not acting as investment advisors and might not be registered with the U.S. Securities and Exchange Commission or the Financial Industry Regulatory Authority. All persons and entities (including their representatives, agents, and affiliates) contributing to the content on this website are not providing investment or legal advice. Nor are they making recommendations with respect to the advisability of investing in, purchasing or selling securities, nor are they rendering any advice on the basis of the specific investment situation of any particular person or entity. All information in this newsletter is strictly informational and is not to be construed as advocating, promoting or advertising registered or unregistered investments of any kind whatsoever. The information provided on this website is provided “as-is” and is not guaranteed to be correct, complete, or current. The sole purpose of this newsletter (including, but not limited to, the contents of this website and any oral or written presentation made in any way referring to or relating to this website) is to provide information which could possibly be used by a person or entity in discussions with his/her/its investment advisors and/or investment decision makers and does not function as a substitute for the advice of an investment advisor. You should consult with your own trusted financial professionals before making any investment or trading decisions. TriBeCa Trade Group is not responsible for the accuracy of any information on this website or for reviewing the contents of the listings that are provided by the listees or any linked websites, and TriBeCa Trade Group is not responsible for any material or information contained in the linked websites or provided by listees. TriBeCa Trade Group makes no warranty, express or implied, about the accuracy or reliability of the information on this website or on any other website to which this website is linked. Your use of this website is at your own risk. In addition, if you use any links to other websites, you do so at your own risk and understand that such linked website is independent from TriBeCa Trade Group. TriBeCa Trade Group does not endorse such linked websites and is not responsible for the contents or availability of such linked websites. These links are provided only as a convenience to you. TriBeCa Trade Group is not responsible for any loss, injury, claim, liability, or damage related to your use of this website or any website linked to this website, whether from errors or omissions in the content of our website or any other linked websites (e.g., injury resulting from the website being down or from any other use of the website). Any information that you send to us in an e-mail message is not confidential or privileged, and TriBeCa Trade Group may use any information legally provided to us for any legal purpose. Owners, employees, agents or representatives of TriBeCa Trade Group may have interests or positions in securities of the company profiled herein. Specifically, such individuals or entities may buy or sell positions, and may or may not follow the information provided in this newsletter. Some or all of the positions may have been acquired prior to the publication of such information on the website, and such positions may increase or decrease at any time. Any opinions expressed and/or information on this website are statements of judgment as of the date of publication /or/ circulation on the website, and such opinions and/or information are subject to change without further notice. Any such change may not necessarily be made available immediately on this website or elsewhere. None of the materials or advertisements herein constitute offers or solicitations to purchase or sell securities of the company profiled herein. Day trading, short term trading, options trading, and futures trading are extremely risky undertakings. They generally are not appropriate for someone with limited capital, little or no trading experience, and/ or a low tolerance for risk. Never execute a trade unless you can afford to and are prepared to lose your entire investment. All trading operations involve serious risks, and you can lose your entire investment. In addition, certain trades may result in a loss greater than your entire investment. Always perform your own due diligence and, as appropriate, make informed decisions with the help of a licensed financial professional. TriBeCa Trade Group makes no warranties or guarantees as to our accuracy, the profitability of any trades which are discussed, or any other guarantees or warranties of any kind. You should make your own independent investigation and evaluation of any possible investment or investment advice being considered. Commissions, fees and other costs associated with investing or trading may vary from broker to broker. You should speak with your broker about these costs. Be aware that certain trades that may be profitable for some may not be profitable for you, after taking into account these costs. You should also be aware that, in certain markets, you may not always be able to buy or sell a position at the price I discuss. Thus, you may not be able to take advantage of certain trades discussed herein.